

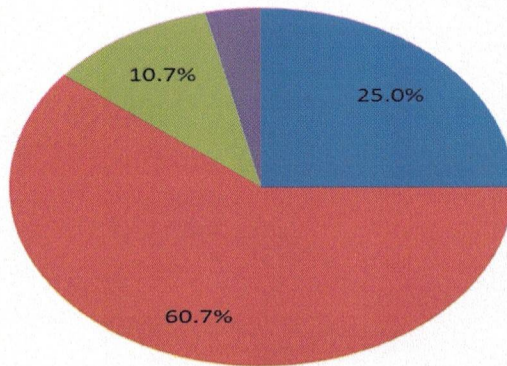


Feed Back Analysis Report of Students Feedback for the Course/Curriculum

Academic Year -2022-2023

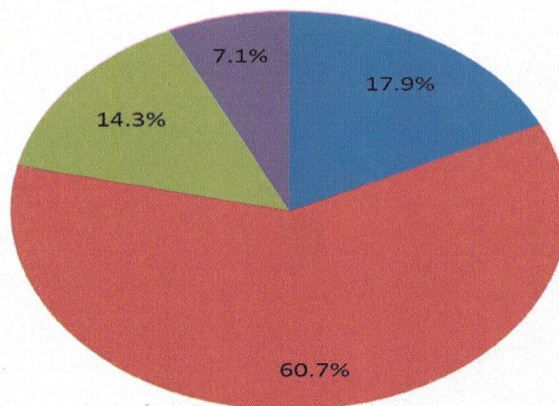
The students Feedback for the course/curriculum were conducted according to format prepared by the School of Liberal Arts. The responses from the students are collected & analyzed and the detailed report of the students feedback analysis is as follows:

1. Content of syllabi of the courses



From the above graph, we can infer that 75% of the respondents have strongly agreed and 25% of the students have agreed that the syllabus is suitable to the course.

2. Extent of syllabus covered in class

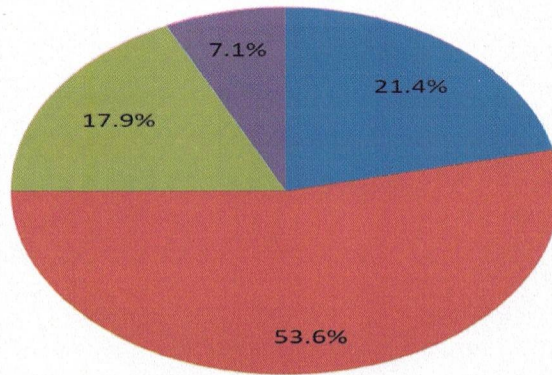


From the above graph, we can infer that 93% of the students have strongly agreed that the curriculum helps in the intellectual development of the students and 7.00% of the students agree to the factor.



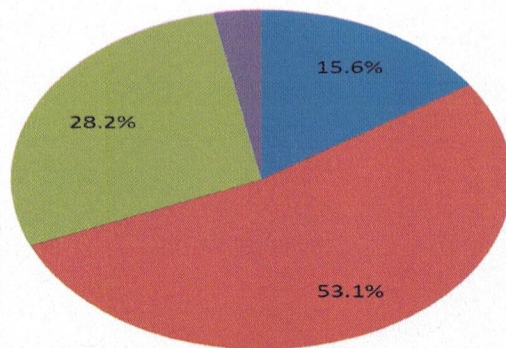


3. Delivery of syllabi in class



From the above graph, we can observe that 93 % of the students have strongly agreed that the course content has been followed by relevant reference materials and 7.00% are agreeing to the same.

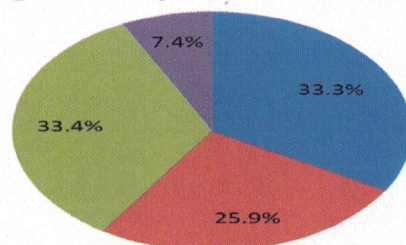
4. Use of teaching aid and ICT in class to facilitate teaching



From the above graph, we can infer that 97.00% of the students strongly agree to the question that the faculty members have the freedom to adopt new techniques of teaching while 03.00% of the respondents have also agreed to the question.

5. Overall experience with internal assessment (Quiz, assignments, presentations, etc.)

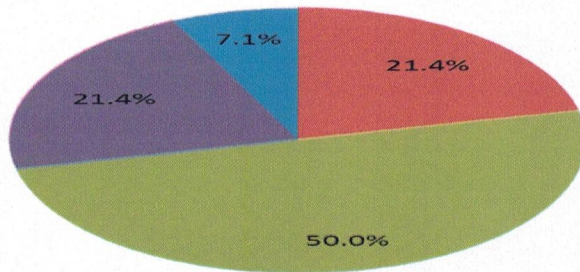
5. Overall experience with internal assessment (Quiz, assignments, presentations, etc Student





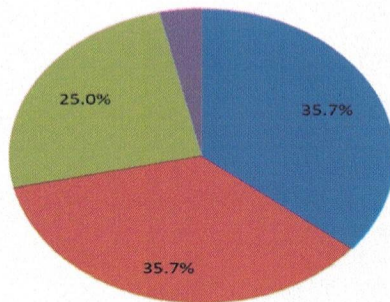
From the above graph, we can observe that 93.6% of the respondents have strongly agreed to the factor that the environment in the college is conducive for teaching activities and 7.4% of the respondents have agreed to the same.

6. Student teacher interaction



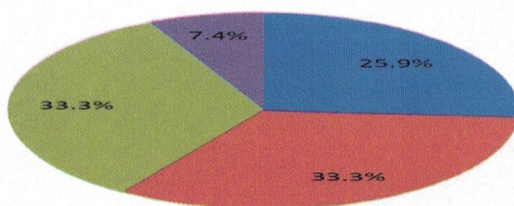
From the above graph we can infer that, 92.9% of the students have strongly agreed to the question that the administration is staff friendly and 7.1% of the respondents also agree to the same.

7. Integration of theory and practical in classes (wherever applicable)



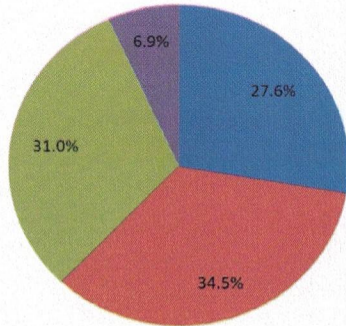
The resulting pie chart will visually represent the distribution of student feedback on the course "Simulation for Innovative Thinking," with each category's size proportional to its percentage in the dataset. In this case, "Very Good" would be the largest sector, followed by "Good," "Excellent," and "Average." This pie chart provides a clear visual representation of how students rated the course.

8. Integration of theory and practical in classes (wherever applicable)



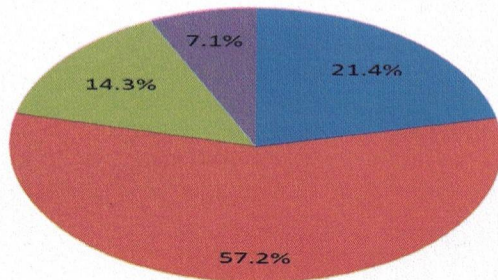


9. Overall learning experience



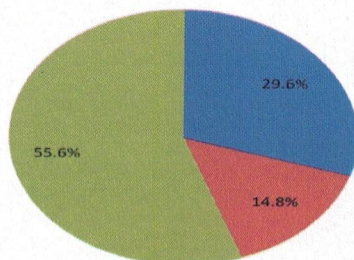
The resulting pie chart will visually represent the distribution of student feedback on the overall learning experience, with each category's size proportional to its percentage in the dataset. In this case, "Good" and "Very Good" would be the largest sectors, followed by "Excellent," and "Average" would be the smallest. This pie chart provides a clear visual representation of how students rated their overall learning experience.

10. Condition of lab equipment



The resulting pie chart will provide a clear visual representation of how students rated the condition of the lab equipment. In this case, "Very Good" would be the largest sector, followed by "Good," "Excellent," and "Average" in decreasing order of size. This chart allows viewers to quickly understand the distribution of student feedback on the lab equipment's condition.

11. Availability of online resources

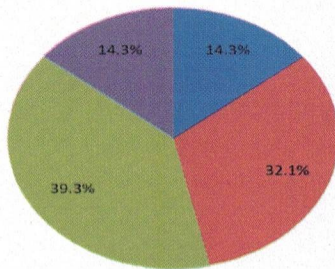




The resulting pie chart will provide a clear visual representation of how students rated the availability of online resources. In this case, "Very Good" would be the largest sector, followed by "Good," "Excellent," and "Average" in decreasing order of size. This chart allows viewers to quickly understand the distribution of student feedback on the availability of online resources.

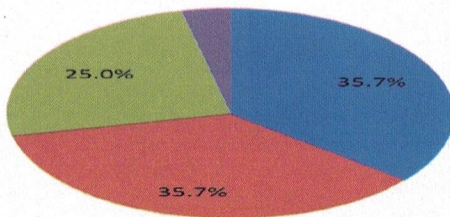
12. Opportunity to participate in seminar/workshop/conference/moot courts/Research projects

The resulting pie chart will provide a clear visual representation of how students rated the opportunity to participate in seminars, workshops, conferences, moot courts, and research projects. In this case, "Good" would be the largest sector, followed by "Excellent," "Very Good," and "Average" in decreasing order of size. This chart allows viewers to quickly understand the distribution of student feedback on the availability of such opportunities.

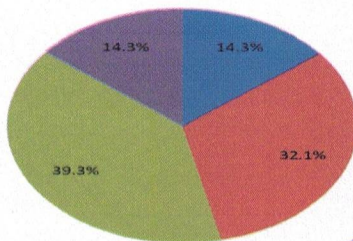


13. Experience with research environment

The resulting pie chart will provide a clear visual representation of how students rated their experience with the research environment. In this case, "Very Good" would be the largest sector, followed by "Excellent," "Average," and "Good" in decreasing order of size. This chart allows viewers to quickly understand the distribution of student feedback on their research environment experience.



14. Participation in co-academic and cultural events





AJEENKYA
DY PATIL UNIVERSITY
THE INNOVATION UNIVERSITY

**School of
Liberal Arts**

The resulting pie chart will provide a clear visual representation of how students rated their participation in co-academic and cultural events. In this case, "Good" would be the largest sector, followed by "Very Good," "Average," and "Excellent" in decreasing order of size. This chart allows viewers to quickly understand the distribution of student feedback on their participation in such events.

Along with the above 7 objective questions, one subjective question was asked to the faculty members regarding their suggestions. Some of the suggestions given by the faculty members are as follows:

- 1) There should be some bridge courses for the subjects like Accounting and Quantitative methods for I BA students.
- 2) Need for value added courses.

Head – School of Liberal Arts

Head

School of Liberal Arts
Ajeenkya DY Patil University
Charholi Bk, Via Lohegaon,
Pune-412105.



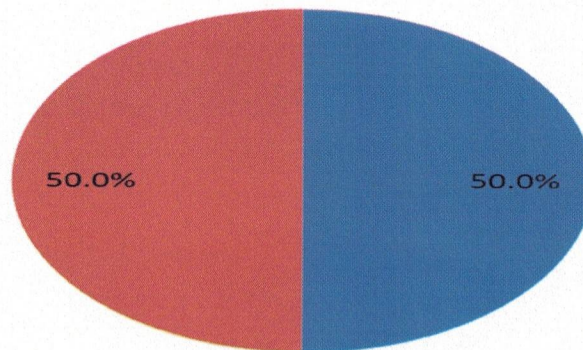


Feed Back Analysis Report of Faculty Feedback for the Course/Curriculum

Academic Year -2022-2023

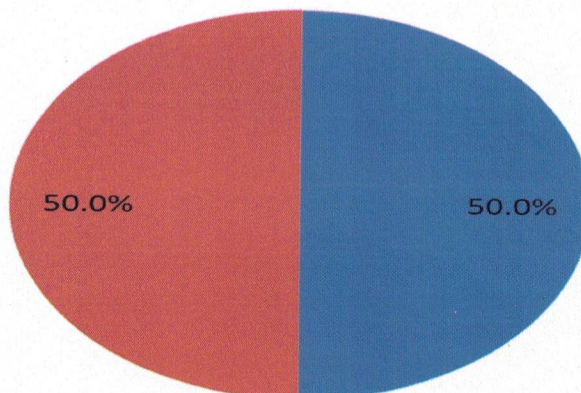
The Faculty Feedback for the course/curriculum was conducted according to format prepared by the School of Liberal Arts. The responses from the faculties are collected & analyzed and the detailed report of the faculty feedback analysis is as follows:

1. How do you find the allocation of the credits to the course



the feedback suggests that the majority of faculty members view the allocation of credits to the course positively, with half rating it as "Excellent" and the other half as "Very good." This indicates that the credit allocation is generally well-received and appropriate for the course in their perspective.

2. How do you rate the depth of the course content to have significant learning

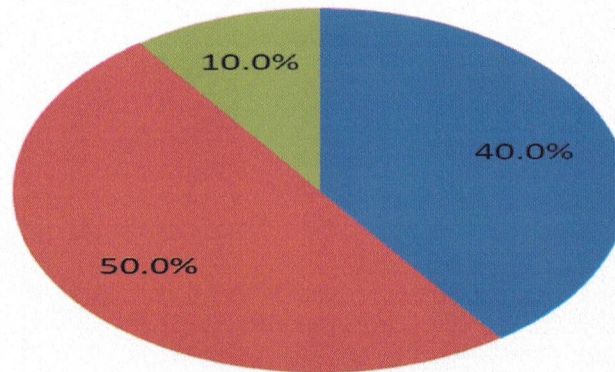


the feedback suggests that the majority of faculty members view the depth of the course content positively, with half rating it as "Excellent" and the other half as "Very good." This indicates that the course content is generally considered to have a high level of depth, facilitating significant learning.





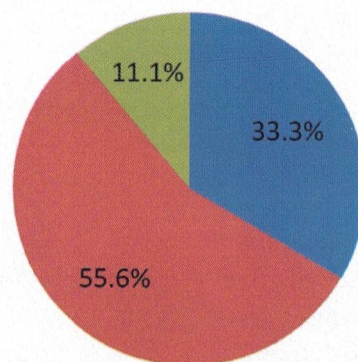
3. Is the syllabus sufficient to bridge the gap between industry standards/current global scenario and academics



the feedback indicates that the majority of faculty members believe that the syllabus is doing a good to excellent job in bridging the gap between industry standards/current global scenarios and academic content. However, there is some variability in opinions, with a minority of faculty members suggesting that there may be room for improvement. Overall, the syllabus appears to be well-aligned with industry standards and global scenarios in the eyes of the faculty.

4. How do you rate the consequence of units/modules in the syllabus

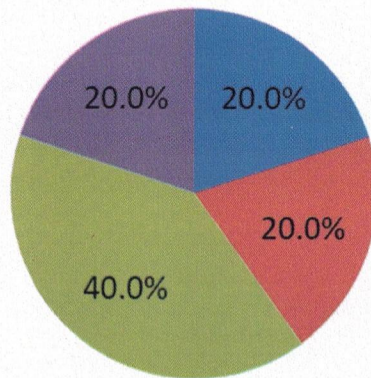
How do you rate the consequence of units/modu



In summary, the feedback indicates that most faculty members view the consequence of units/modules in the syllabus positively, with a majority rating it as either "Excellent" or "Very good." However, there is some variability in opinions, with a smaller percentage rating it as "Good," and it's unclear whether any faculty members have rated it as "Average." Overall, the consequences of these units/modules are perceived positively by the faculty.

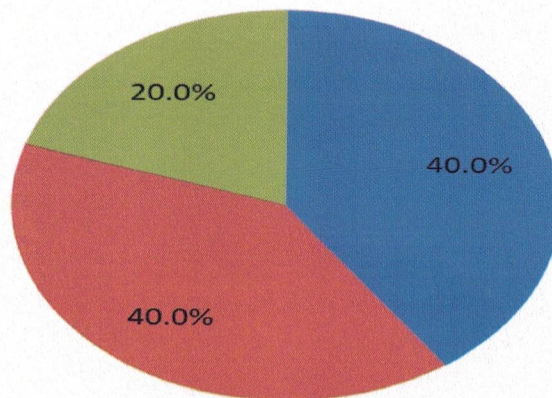
5. Availability of sufficient reference material and books for topics mentioned in the syllabus





the feedback suggests that the availability of reference material and books for the syllabus topics is generally rated positively, with a significant portion of faculty members considering it either "Good" or "Very good." However, there is some variability in opinions, with a smaller percentage rating it as "Excellent," and a similar percentage rating it as "Average." This suggests that there may be areas where additional resources could be beneficial.

6. How do you rate the enrichment of the programs and curriculum as compared to similar programs offered by other Universities



the feedback indicates that the overall enrichment of the programs and curriculum at your university is generally rated positively, with the majority of faculty members considering it either "Very good" or "Good." However, there is some variability in opinions, with a smaller percentage rating it as "Excellent," and an even smaller percentage rating it as "Average." Overall, the programs and curriculum are perceived as enriched compared to similar programs at other universities.

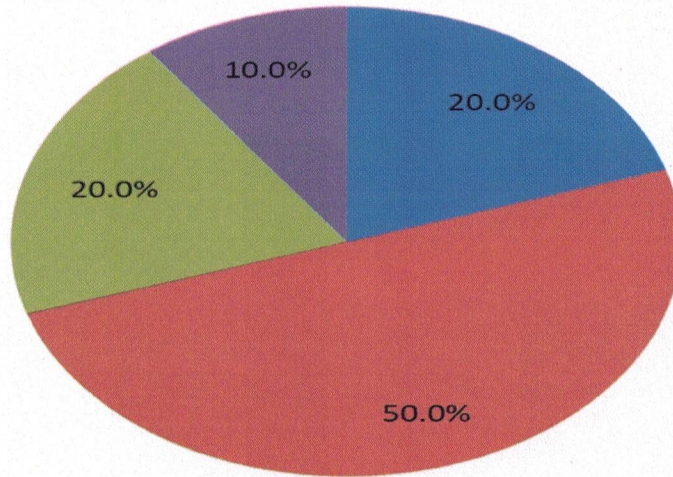
7. Your overall academic experience





AJEENKYA
D Y PATIL UNIVERSITY
THE INNOVATION UNIVERSITY

School of
Liberal Arts



In summary, the feedback suggests that the overall academic experience at your institution is highly regarded by faculty members, with the majority rating it as either "Excellent" or "Very good." This reflects a positive assessment of the quality of education and the learning environment.

Along with above 7 objective questions, one subjective question was asked to the faculty members regarding their suggestions. Some of the suggestions given by the faculty members are as follows:

- 1) There should be some new G E courses for the subjects

Head – School of Liberal Arts
Head
School of Liberal Arts
Ajeenkya DY Patil University
Charholi Bk, Via Lohegaon,
Pune-412105.



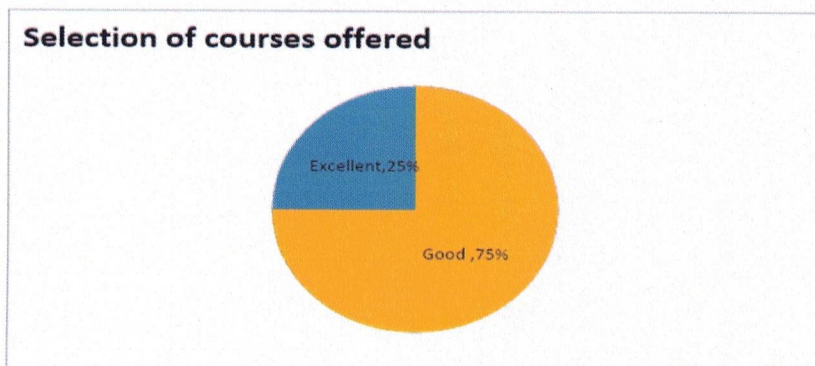


Feed Back Analysis Report of Alumni's Feedback for the Course/Curriculum

Academic Year -2022-2023

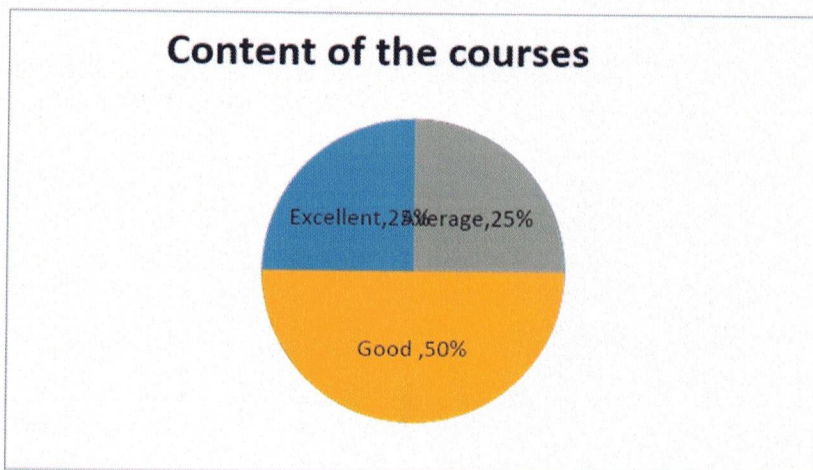
The alumni's for the course/curriculum was conducted according to a format prepared by the School of Liberal Arts. The responses from the alumni's are collected & analysed and the detailed report of the alumni's feedback analysis is as follows:

1 Selection of Courses Offered



From the above graph, we can infer that 25 % of the respondents have strongly agreed and 75% of the faculty members have agreed that the syllabus is suitable to the course.

2. Content to significant learning

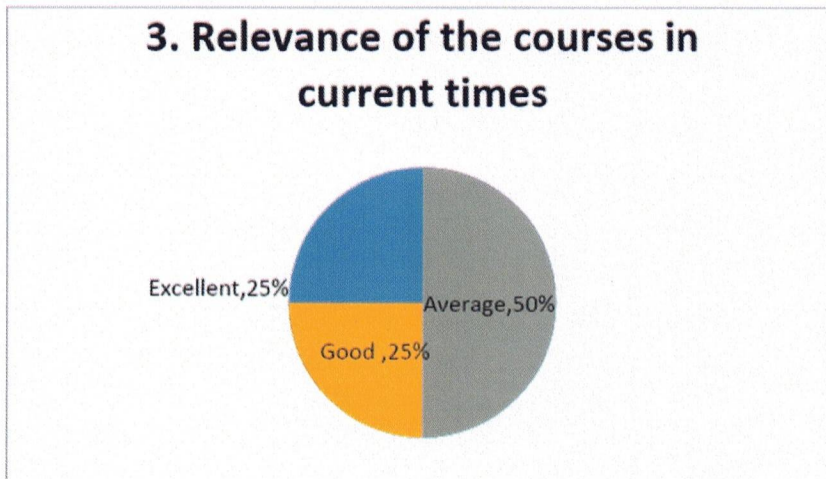


From the above graph, we can infer that 75% of the alumni's have strongly agreed that the curriculum helps in the intellectual development of the students and 25% of the faculty members agree to the factor.



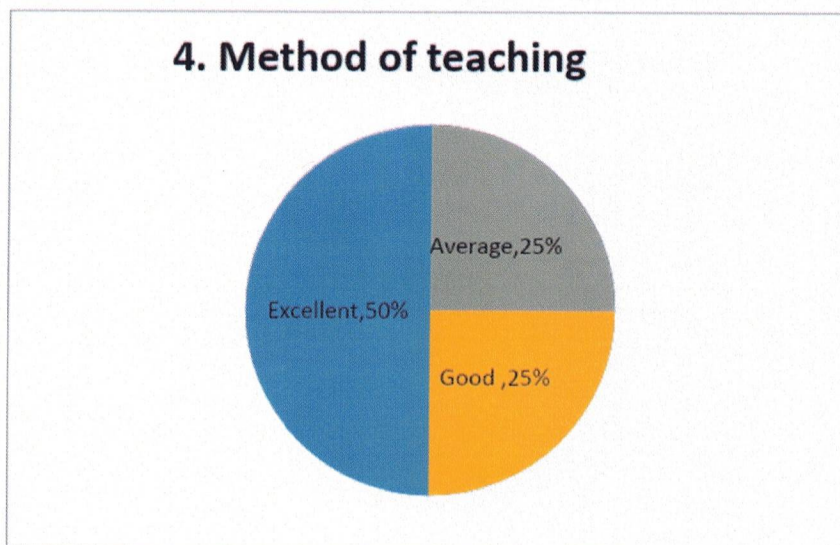


3.Relevance of courses in Current time



From the above graph, we can observe that, 50% of the alumni members have strongly agreed that the course content have been followed by relevant reference materials and 50.% are agreeing to the same.

4. Method of Teaching

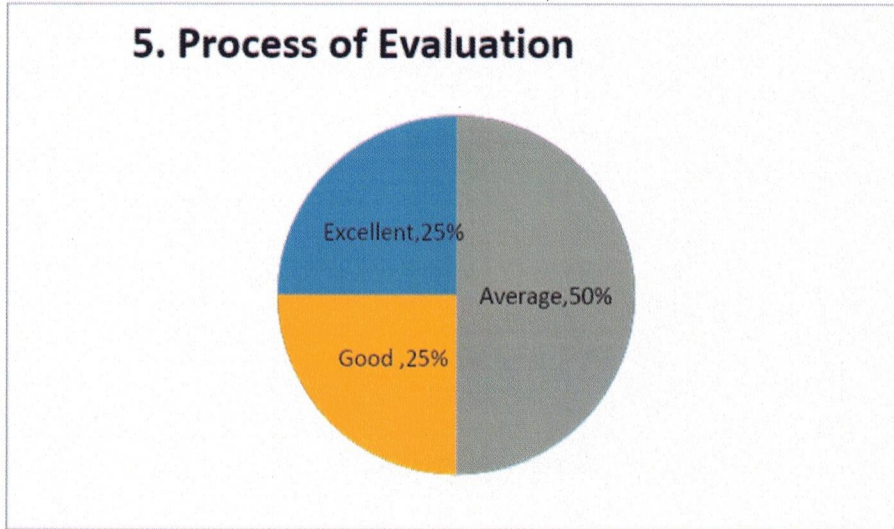


From the above graph, we can infer that 75% of the alumni members strongly agree to the question that the alumni members have the freedom to adopt new techniques of teaching while 25% of the respondents have also agreed to the question.



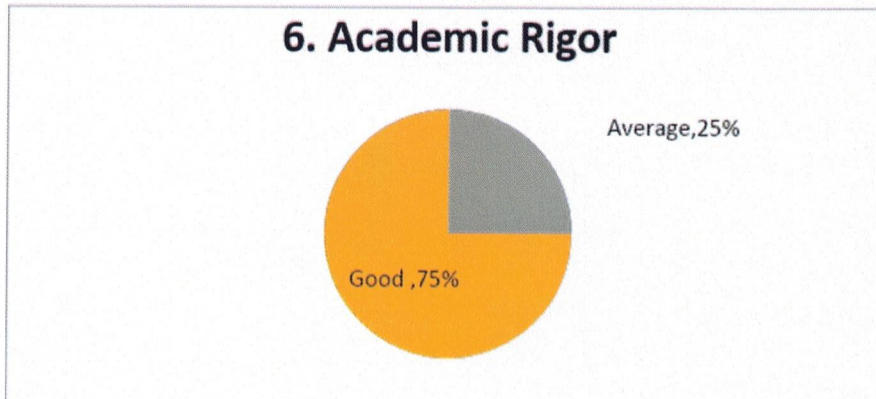


5. Process of Evaluation



From the above graph, we can observe that the 50% of the respondents have strongly agreed to the factor that the environment in the college is conducive for teaching activities and 50% of the respondents have agreed to the same.

6. Academic Rigor

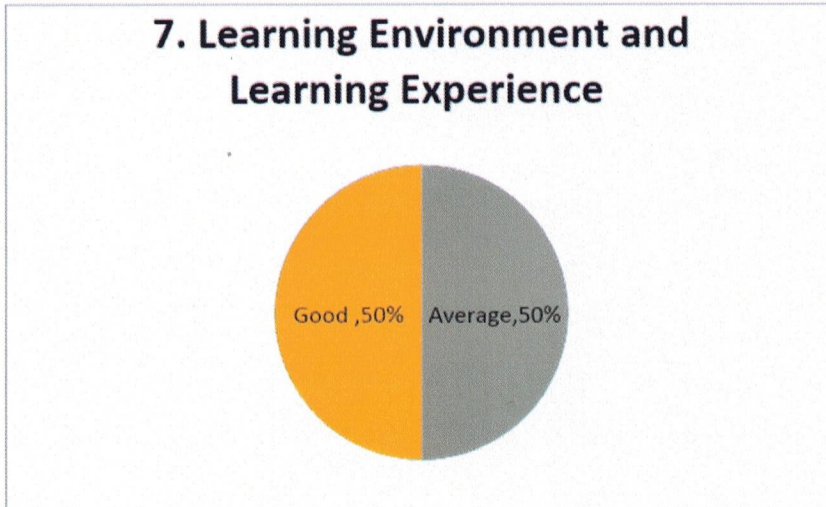


From the above graph we can infer that, 75% of the alumni members have strongly agreed to the question that the administration is staff friendly and 25% of the respondents also agree to the same.



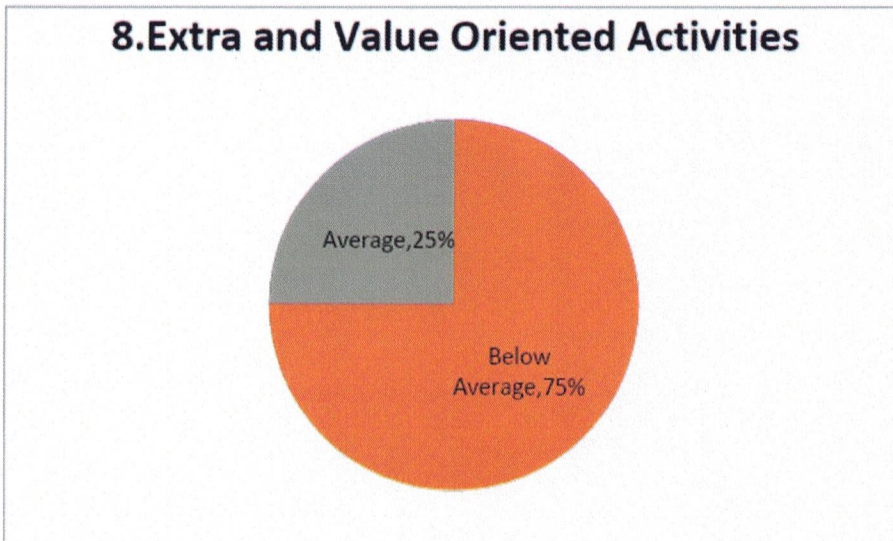


7. Learning Environment and Learning Experience



From the above graph, we can observe that the 50% of the respondents have strongly agreed to the factor that the environment in the college is conducive for teaching activities and 50% of the respondents have agreed to the same.

8. Extra and Value Oriented Activities

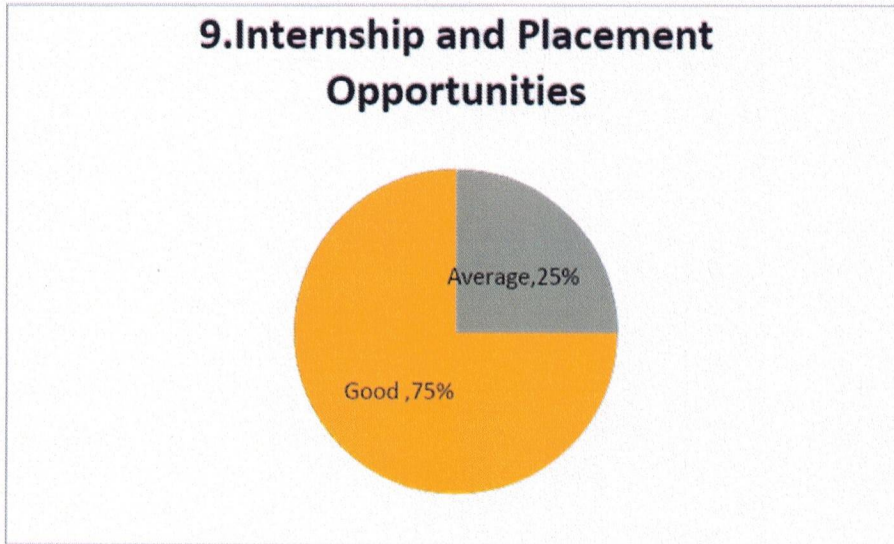


From the above graph, we can observe that the 75% of the respondents have strongly agreed to the factor that the environment in the college is conducive for teaching activities and 25% of the respondents have agreed to the same.





9. Internship and Placement Opportunities



Along with above 9 objective questions, one subjective question was asked to the faculty members regarding their suggestions. Some of the suggestions given by the faculty members are as follows:

- 1) There should be some bridge courses
- 2) Need for value added courses.

Head – School of Liberal Arts

Head
School of Liberal Arts
Ajeenkya DY Patil University
Charholi Bk, Via Lohegaon,
Pune-412105.

